

**Live dashboards for OpenEdge and Pacific,  
built by anyone, available anywhere.**

Introducing DataPA OpenAnalytics

Nick Finch  
CTO

# Introducing DataPA



- **WHO**  
DataPA is the leading provider of Business Intelligence solutions in the Progress market. DataPA enables developers to drive more value from their software and end users to fundamentally change the way they see their business.
- **WHAT**  
We engineer solutions that enable business users to rapidly create live, accurate and relevant intelligence about their organisation, and publish it instantly to any stakeholder in real time.
- **HOW**  
Through the most complete, Progress focused, end-to-end Business Intelligence solution on the market – trusted by market leading developers and world-leading organisations.

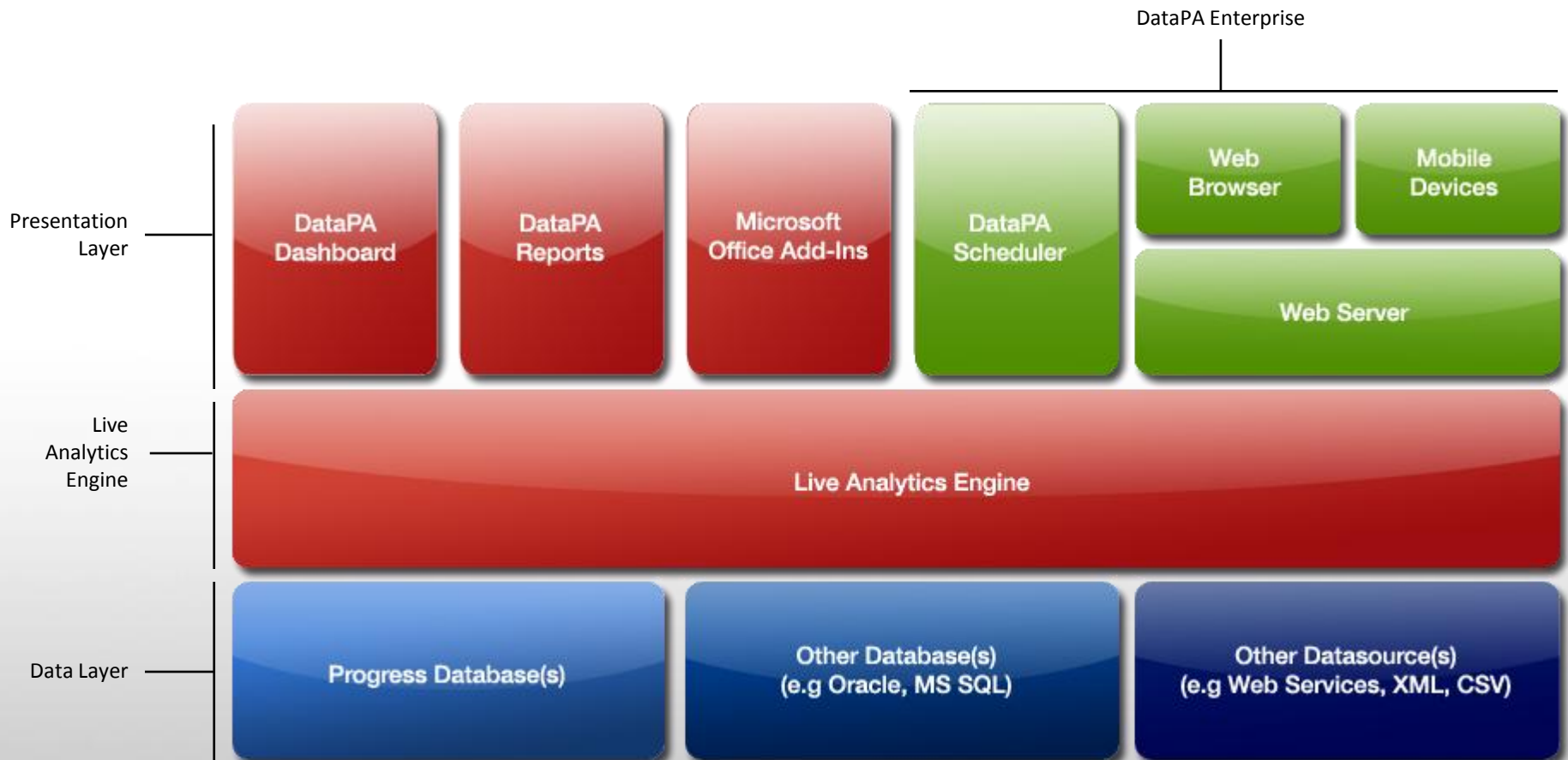
# Live business intelligence makes you agile



Agile business intelligence requires a business intelligence platform that can adapt quickly, with little effort, to the changing demands of any organisation to consistently provide accurate and relevant information.

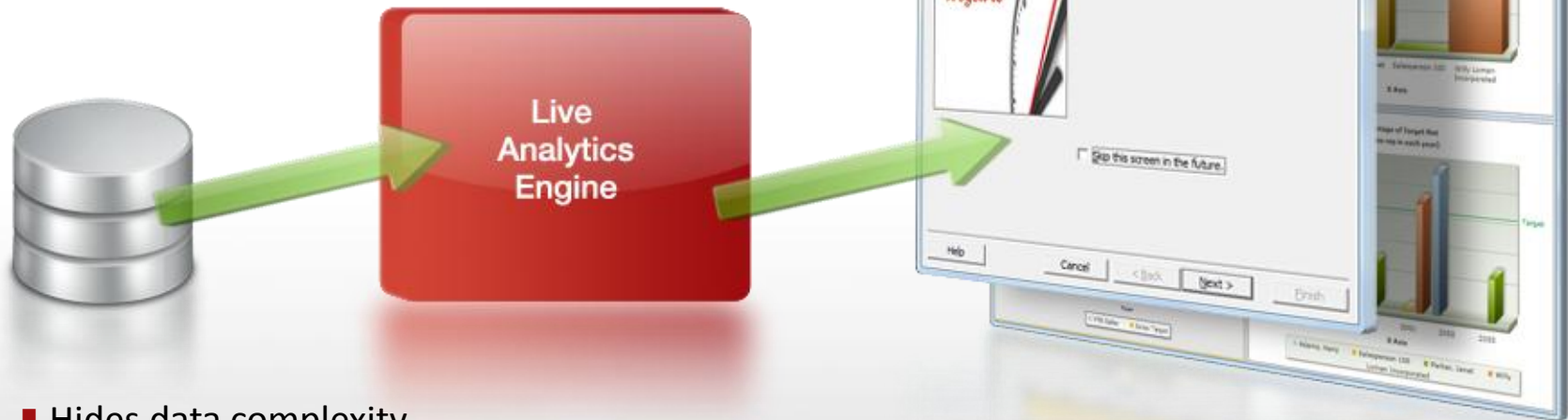
- Rapidly to add new data sources
- Rapidly add new data elements
- Rapidly create and modify analytics
- Rapidly create and modify data visualisation
- Instantly publish to remote stakeholders
- Respond to current, not historic events

# Delivering Live Business Intelligence



# Truly effective self service BI platform

Business users can satisfy their own data requirements



- Hides data complexity
- Provides simple, consistent data building interface
- Protects the performance of underlying application
- Provides fast wide area network data access
- Provides data level security
- Simplifies cross-platform data access

# Build Stunning Dashboards in Minutes

Offer your users stunning Dashboards, allow them to build their own



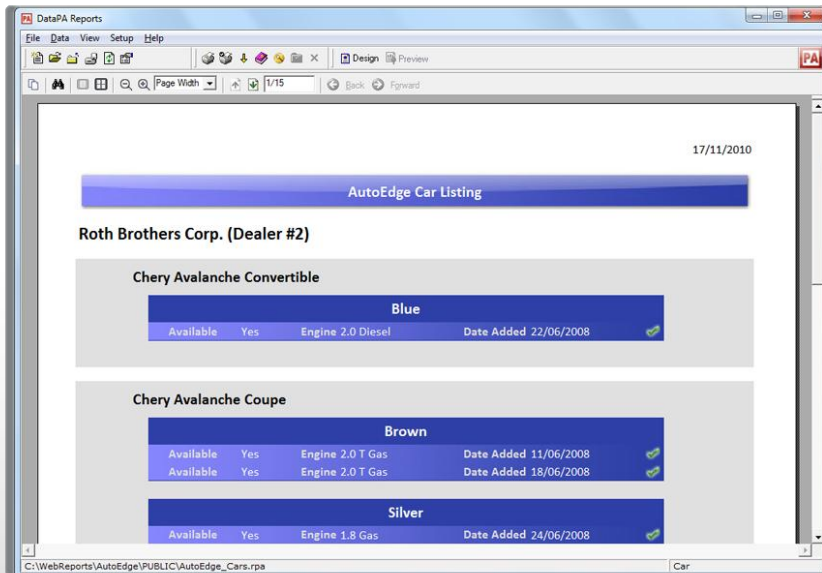
# One Click Publish to web and mobile

Business users can publish to web and mobile with a single click



# Presentation Layer

Solve all document and report requirements with a single solution.

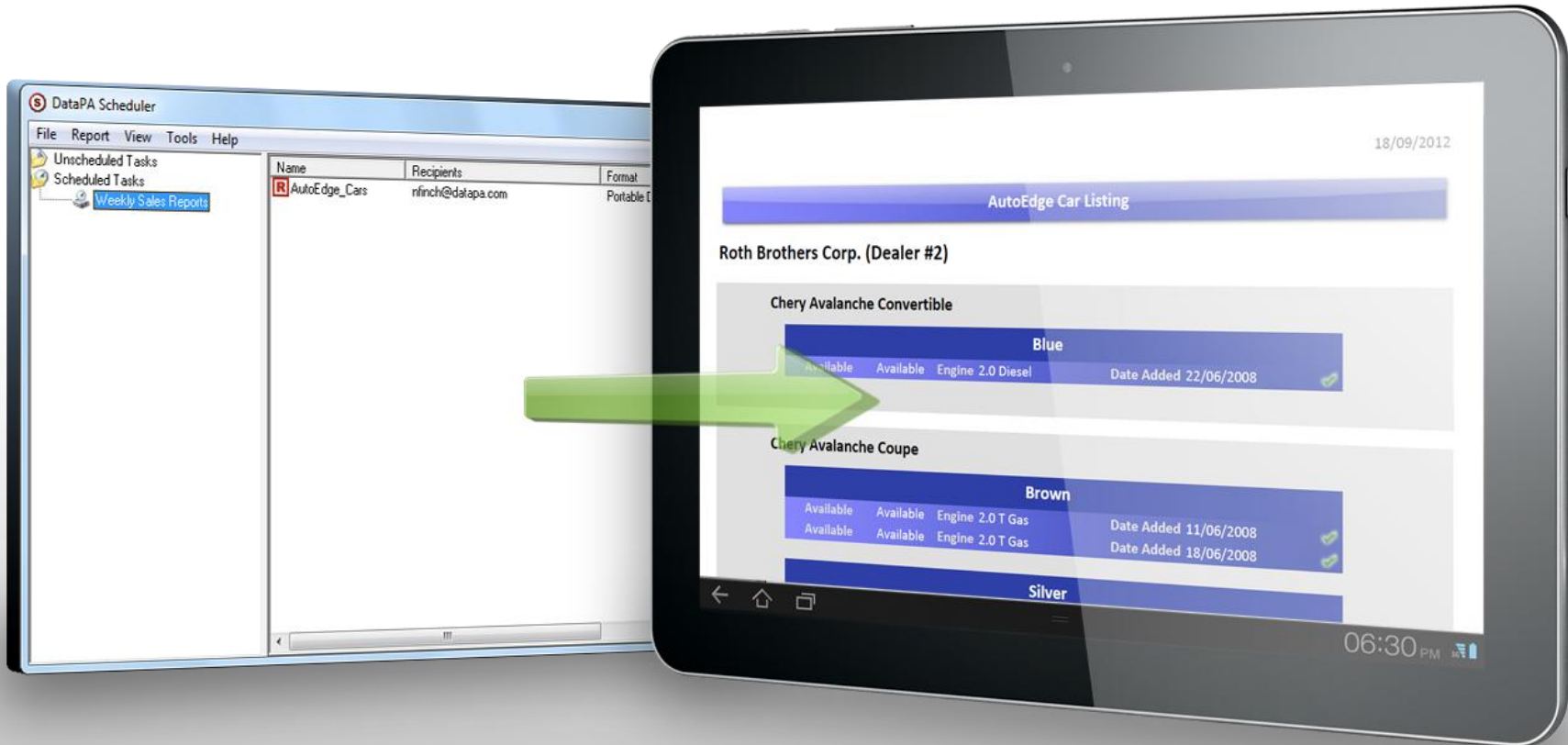


- Grouping/Sorting/Summarising
- Calculated Fields
- Charts & KPI's (e.g Gauges and Traffic Lights)
- Images
- Sub Reports
- Drill down reports
- Pre-formatted rich text support
- Barcodes
- Label printing
- Export to PDF, HTM, Word, Excel, Text ...etc
- Publish to the web with DataPA Enterprise



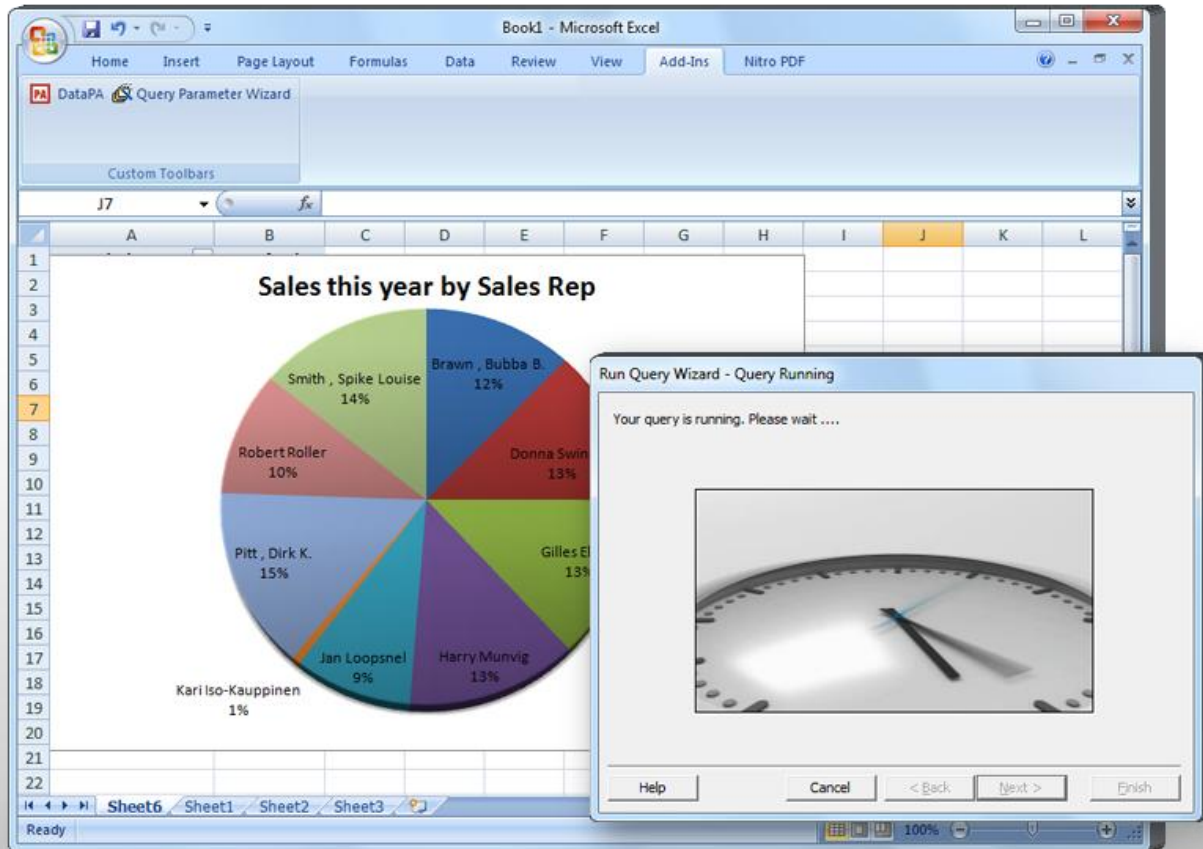
# Presentation Layer

Automatically deliver key performance data to business users



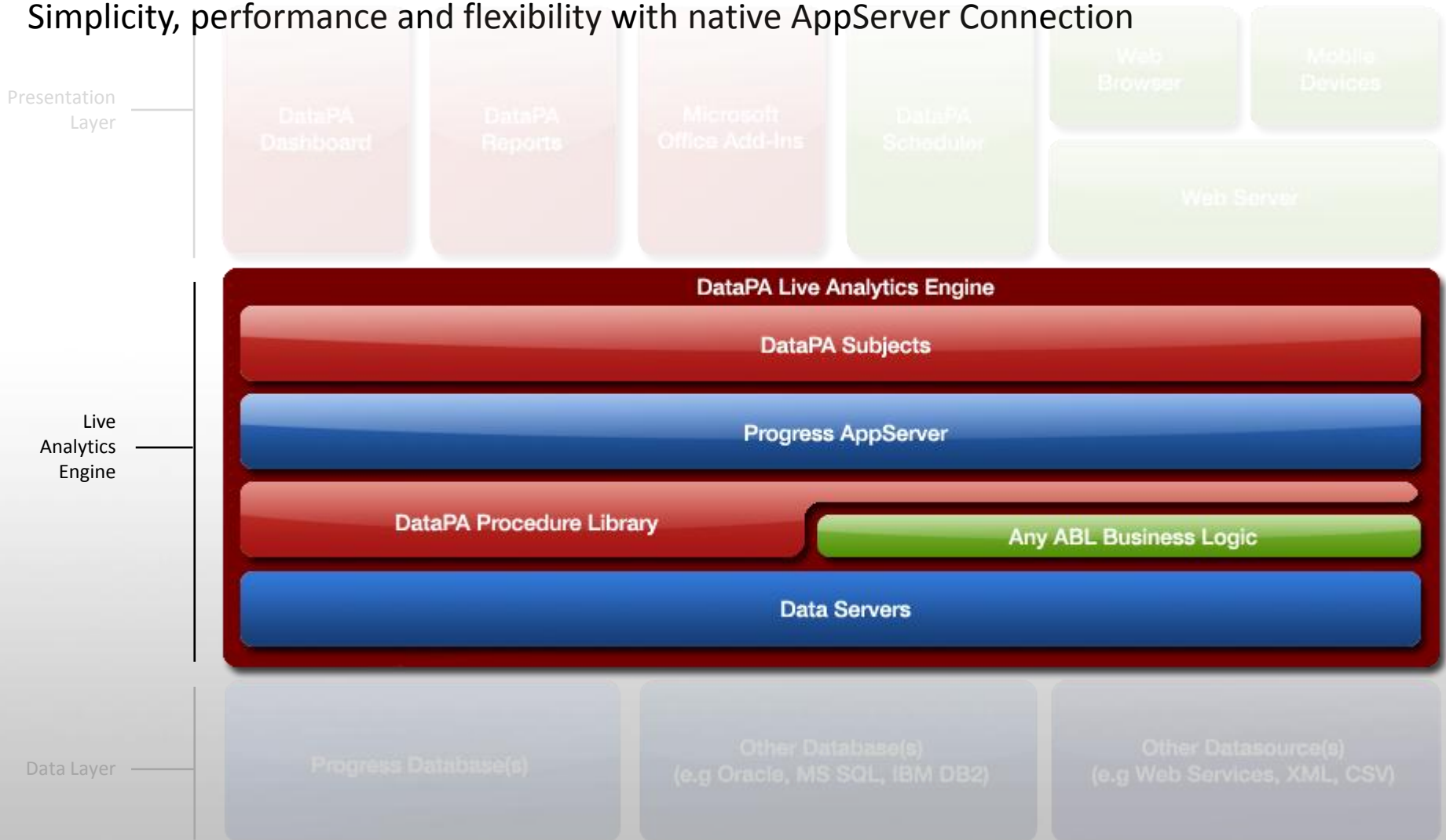
# Presentation Layer

Allow customers to take control of their data with Direct Microsoft Office Integration



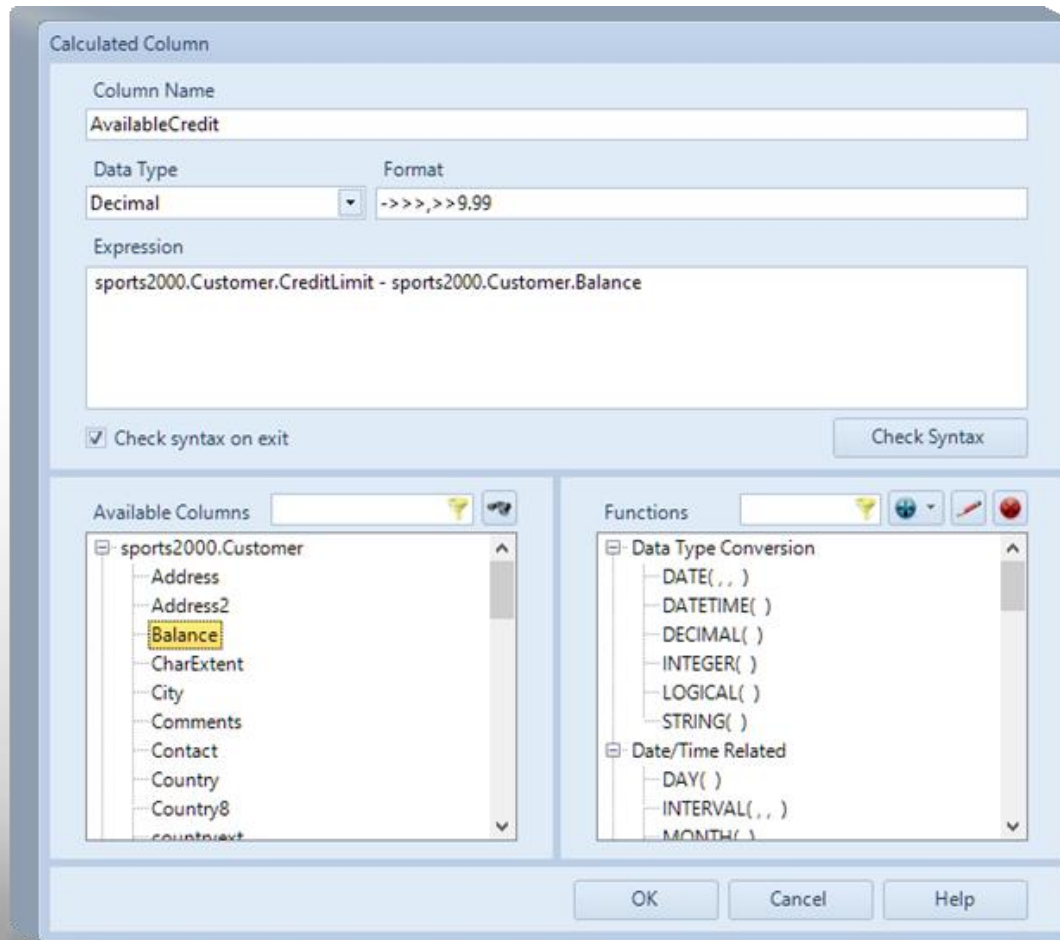
# Build on your existing Investment in Progress

Simplicity, performance and flexibility with native AppServer Connection



# Build on your existing Investment in Progress

Save time and effort with familiar Progress Syntax throughout



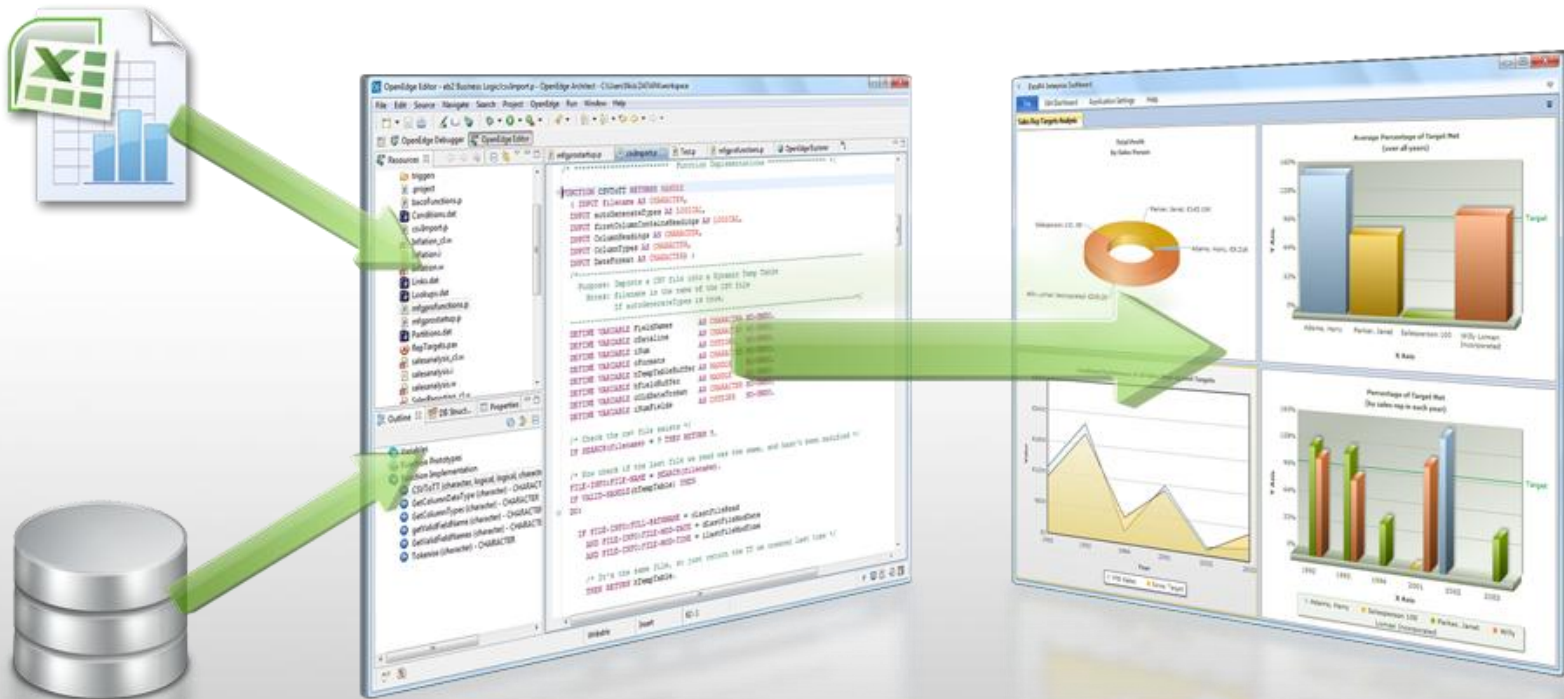
# Build on your existing Investment in Progress

Rapid BI implementation with calculated fields from existing ABL Business Logic

The image displays a workflow for integrating existing ABL business logic into a BI dashboard. On the left, the OpenEdge Editor shows ABL code for a function named `OrderValue`. A dialog box titled "Calculated Column" is overlaid, showing the configuration for a new calculated field: "TotalValueOrdered". The dialog includes fields for "Column Name", "Data Type" (set to Decimal), "Format" (set to >>>,>>>,\$.99), and "Expression" (set to `dynamic-function("ordervalue",sports2000.customer.custnum)`). Below the dialog are lists of "Available Columns" and "Functions". On the right, the DataPA Enterprise Dashboard shows a "Customer Performance" report with a donut chart titled "Top 5 Customers (by total value ordered)". The chart segments are labeled: "Big 5 Sporting Goods, €1.29M", "Sports Connection, €939.6K", and "Play It Again Sports, €1.06M". Green arrows indicate the flow of data from the ABL code through the dialog to the dashboard chart.

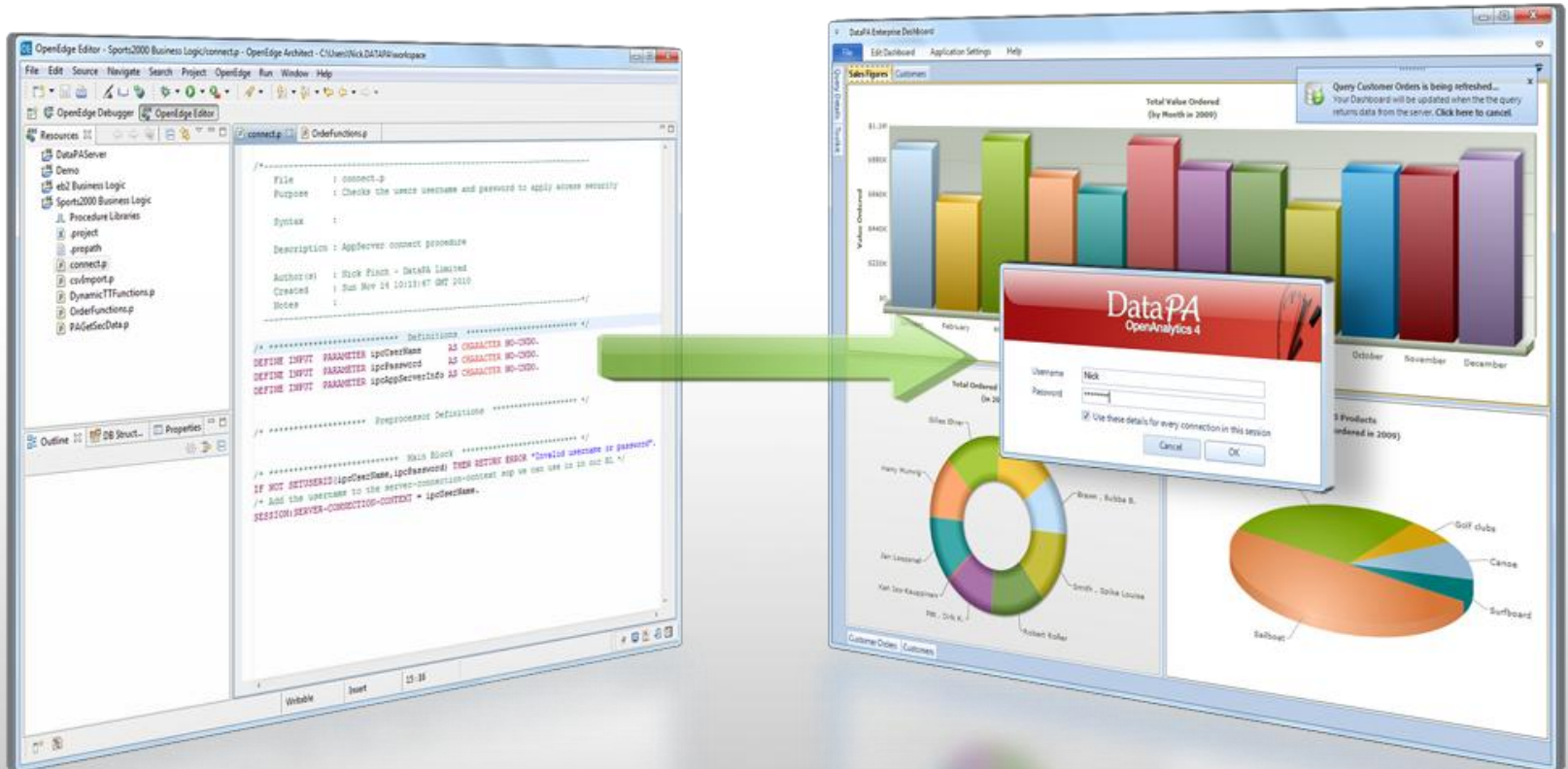
# Build on your existing Investment in Progress

Solve any requirement with BI from ABL generated temp table



# Build on your existing Investment in Progress

The most secure BI platform available with inherited security architecture



# Build on your existing Investment in Progress

Why use DataPA for your to provide BI on your Progress business application?

- ✓ Build on your existing investment in Progress technology, rather than being forced into more cost and complexity.
- ✓ Designed for Progress, DataPA offers Progress professionals a familiar and understood toolset reducing the time and effort required to configure DataPA within their business application and reducing integration issues.
- ✓ Less support issues and certification challenges as everything is pre-certified by Progress and DataPA, DataPA will take ownership of all support issues.



# Rapid development with native support for all Progress Clients



Rollbase

GUI  
for  
.NET

GUI

Webspeed

# The DataPA OEM Program

Deploy to your entire customer base with a single one-off payment

## Licensing Option

Annual Fee

One Off Payment

- DataPA OpenAnalytics Developer license
- Unlimited redistribution of DataPA OpenAnalytics Runtime
- Discounted OpenAnalytics Business licenses
- Training materials to build courses for your users
- Supporting marketing materials

# The DataPA OEM Program



## Your software is more beautiful, easier to sell

- Create a fantastic sales tool with stunning dashboards and reports seamlessly embedded into your own technology
- It's easy, be up and running in days with native integration to your existing user interface and business logic
- Defined cost with a simple, low cost, royalty free OEM model



## You earn more from existing customers

- Offer customers a BI module that allows them to rapidly create live, accurate and relevant intelligence.
- Increase the flexibility and value of your business application with simple, one click publish mobile and web apps

# Questions

